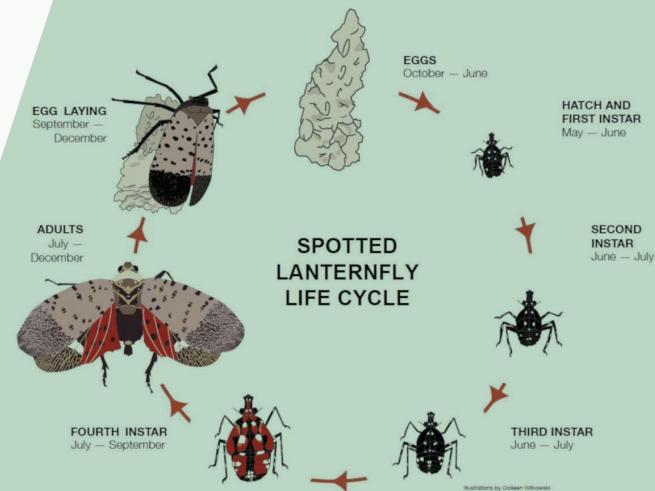


GOODBYE SPOTTED LANTERNFLY



Reduce the moldy mess while protecting your trees with Arborjet tree injection technology. Schedule your treatment today!

What is Spotted Lanternfly (SLF)?

The Spotted Lanternfly aka SLF is a large piercing and sucking insect, which feeds on the sap of many plants during the younger nymph stages but prefers trees in the later instar nymph and adult stages. Adults have black bodies with brightly colored underwings. SLF front wings are gray with black spots, and the tips of the wings are black with gray veins. Nymphs are black and white for the first three instars but are mostly red in the last instar stage. All stages are excellent jumpers, but the adults will fly to some extent. SLF completes one generation per year, with the egg stage overwintering. SLF is known to feed on more than 70 species of plants and trees, including wild and cultivated grapes, hops, tree of heaven, walnut, maple, and birch.

How will my tree be affected by an attack?

Trees attacked by SLF will develop weeping wounds, which leave a grayish or black trail along the trunk. This sap attracts other insects like wasps, ants, and flies to feed. Honeydew released by feeding adults will cover surfaces under trees and serve as a medium for black sooty mold. Left untreated, SLF feeding will cause yellowing of branch tips on host trees. Tree mortality can occur over the course of 2-5 years.



DAMAGE DONE BY SLF

Contact Us!

Treatment & Goals:

Arborjet recommends trunk injections of IMA-jet®, ACE-jet™, or a combination. Applications should be made prior to or during adult congregations. The goal is to reduce populations, honeydew and sooty mold production, and egg mass occurrence. Unfortunately treatments will not eliminate SLF due to repeating infestations.

- Reduce tree mortality rates
- Reduce damage to the property from honeydew and sooty mold

Why use tree injection over soil drench or spray?

Arborjet's tree injection technology offers an environmentally sound option for treating your valuable trees.

- The closed system puts small amounts of formulation into the trees vascular system and is sealed with a plug.
- No off-target application or exceeding legal use rates
- Product stays where applied, nothing in your soil or water
- Able to control all season

What to expect after a tree injection treatment

Spotted Lanternfly mortality occurs after ingestion, generally within a few days of treatment application, and continues for up to 2-3 months with ACE-jet and one growing season with IMA-jet. Adults may continue to migrate/swarm to your "attractive" treated trees into the fall, but feeding is limited and sticky honeydew and black sooty mold production will decline.

Why might we recommend additional products?

Applications of products like NutriRoot® and Mn-jet Fe™ may be recommended to help increase a tree's resilience to these attacks by providing essential nutrients and/or soil amendments.

DRILL, PLUG, AND INJECT METHOD

The Drill, Plug, and Inject method injects or infuses treatments directly into the tree's vascular system assuring the dose is rapidly carried to the target area.

