

ARBORplugs®

FOR TRUNK INJECTION

ARBORPLUGS

Arborplugs® are a revolutionary advancement in trunk injection technology. Arborplugs seal high volume injections inside trees and help provide leading industry results. For over 10 years, Arborplugs have been a key component to the Arborjet trunk injection method which includes innovative equipment and formulation chemistries.



#4 Arborplug 3/8"

(070-0155) Pack of 100

(010-6004) Pack of 25

Recommended for: Conifer and medium to large trees.

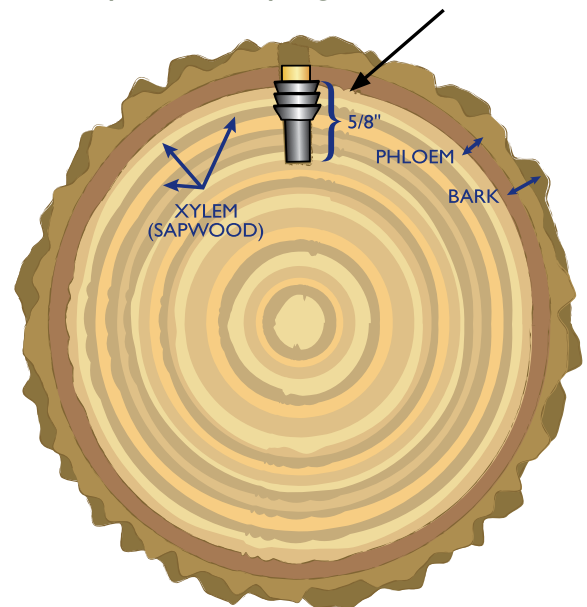


#3 Arborplug 9/32"

(070-0150) Pack of 100

Recommended for: Small to medium deciduous trees.

Proper Arborplug Placement



The small size of the Arborplug minimizes impact on trees.

Arborplug Advantages

- Creates a tight seal for fast, consistent injections.
- Protects the surrounding environment and the applicator from unintended product contact.
- Minimizes the number of injection sites and helps to inhibit infection.



This shows the Arborplug being tapped in with the set tool.

WHY INJECT IN THE XYLEM?

The xylem is the transport tissue of the tree. Xylem quickly distributes water and formulation chemistry throughout the entire tree including the phloem where boring insects feed. Arborjet formulations are **injected** into the phloem where boring insects feed.

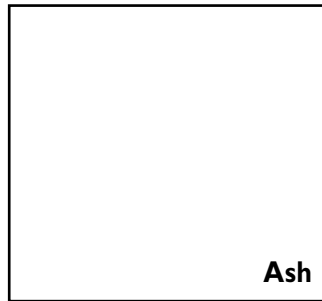
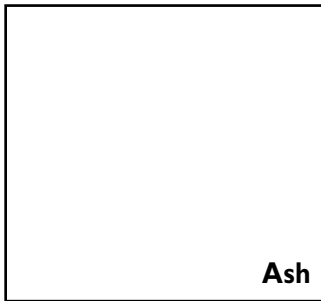
DO I LEAVE THE ARBORPLUG IN THE TREE?

Yes. Trees are very good at producing new wood and over time, the Arborplug will be sealed inside the tree. The Arborplug provides a surface for new wood to grow over.

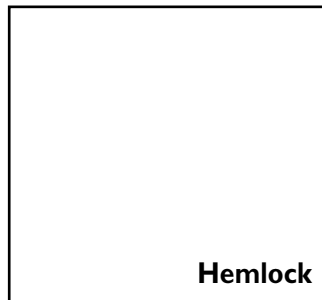
WHAT HAPPENS AFTER THE INJECTION?

Many Arborists ask us what the injection site looks like over time. All trees will close over the injection site¹, but the amount of time will vary based on tree health and species. If the Arborplug is set too shallow, sometimes the tree will push the Arborplug out. Either way, the tree closes over the injection site.

EXAMPLES OF INJECTION SITES



Ash: Injection sites will close within 1-2 years.



Hemlock: Wound closure can take up to 2-3 years. Conifers, like hemlocks, are slow to close wounds.



Maple: Wood closure can take from 1-2 years, an average amount of time.



Sycamore: Wound closure can take from 3 months to 1 year. Sycamores quickly develop woundwood.

¹Palm trees do not close over the injection site since they are monocots and have a different physiology.
©2012 Arborjet, Inc., 99 Blueberry Hill Rd. Woburn MA 01801. Arborplug™ is a trademark of Arborjet, Inc. REV 3/12