

The Best Just Got Better!

Now labeled for the effective treatment of more invasive tree pests.



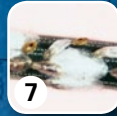
WEST

- 1. Mountain Pine Beetle
- 2. Western Spruce Budworm
- 3. Western Pine Beetle
- 4. Tussock Moth
- 5. Leafminer
- 6. Eucalyptus Borer



MID-WEST

- 7. Pine Needle Scale
- 8. Pinewood Nematode
- 9. Sawfly
- 10. Emerald Ash Borer
- 11. Mimosa Webworm
- 12. Gypsy Moth
- 13. Honeylocust Plant bug
- 14. Bagworm
- 15. Clearwing Borer



NORTH-EAST

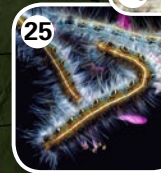
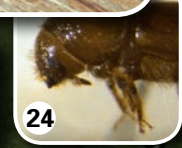
- 16. Fall Webworm
- 17. Winter Moth
- 18. Emerald Ash Borer
- 19. Bronze Birch Borer



As of this printing (4/19/11), TREE-äge® is not currently registered for use or sale in CA, NV, WA, MS, AL, ME, NH, HI and AK. Please check with your state of local extension service prior to buying or using this product. These states are indicated in grey on the map.



TREE-äge® Insecticide is injected into the tree's vascular tissue to assure rapid distribution and consistent results.



SOUTH-EAST

- 20. Pine Coneworm
- 21. Red Palm Mite
- 22. Twolined Chestnut Borer
- 23. Southern Pine Beetle
- 24. *Ips* Engraver Beetle
- 25. Eastern Tent Caterpillar
- 26. Emerald Ash Borer
- 27. Pine Cone Seed Bug

©2011 Arborjet, Inc., 99 Blueberry Hill Rd. Woburn MA 01801. Important: Always read and follow label instructions before buying or using these products. The instructions contain important conditions of sale, including limitations of warranty and remedy. TREE-äge® Insecticide is a Restricted Use Pesticide and must only be sold to and used by a state certified applicator or by persons under their direct supervision. TREE-äge® is not registered for use in all states. Please check with your state or local extension service prior to buying or using this product. TREE-äge® is a registered trademark of Arborjet, Inc.

Image citations can be viewed at <http://arborjet.com/docs/map-citations.pdf>